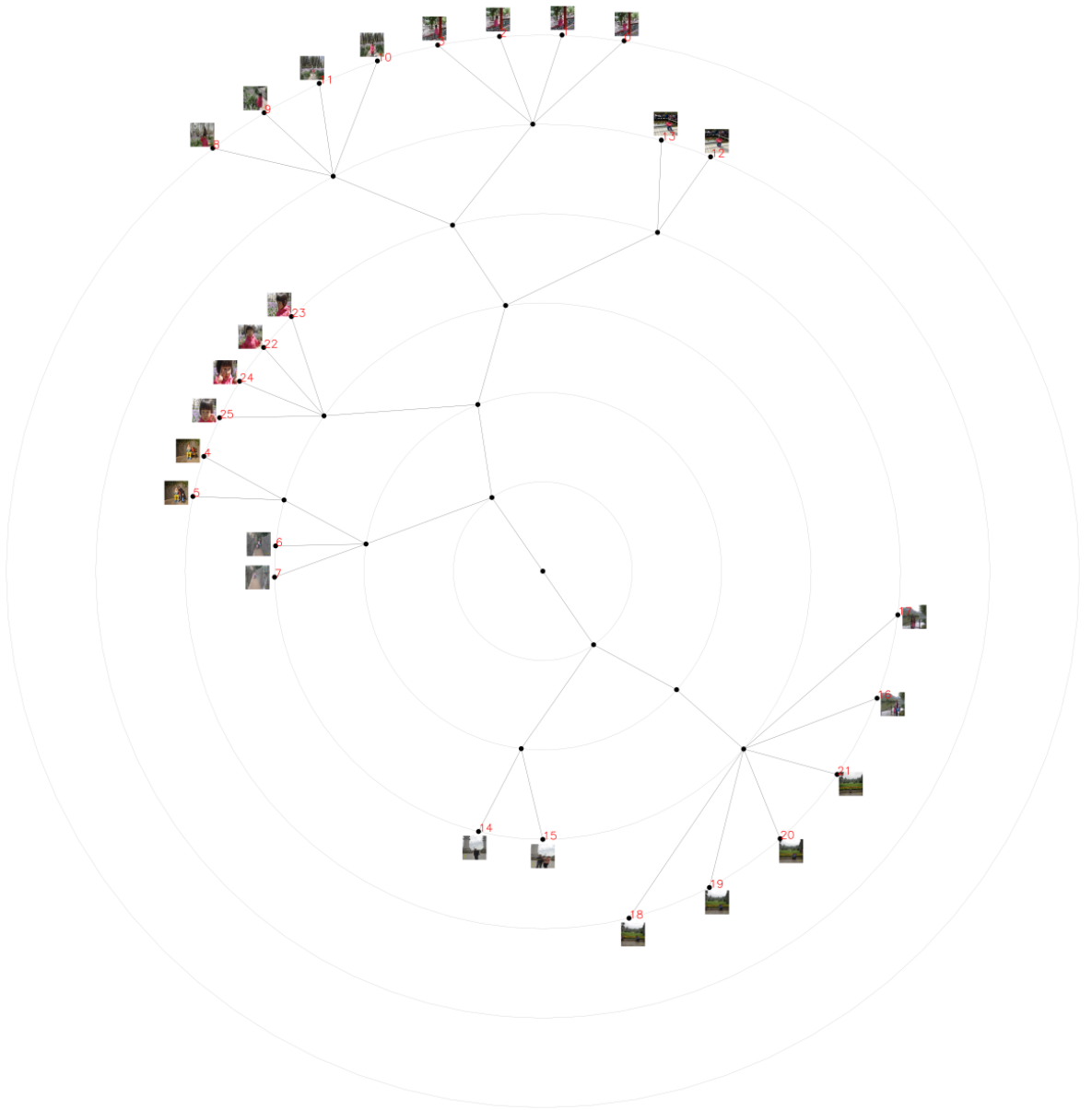


Attachment Material

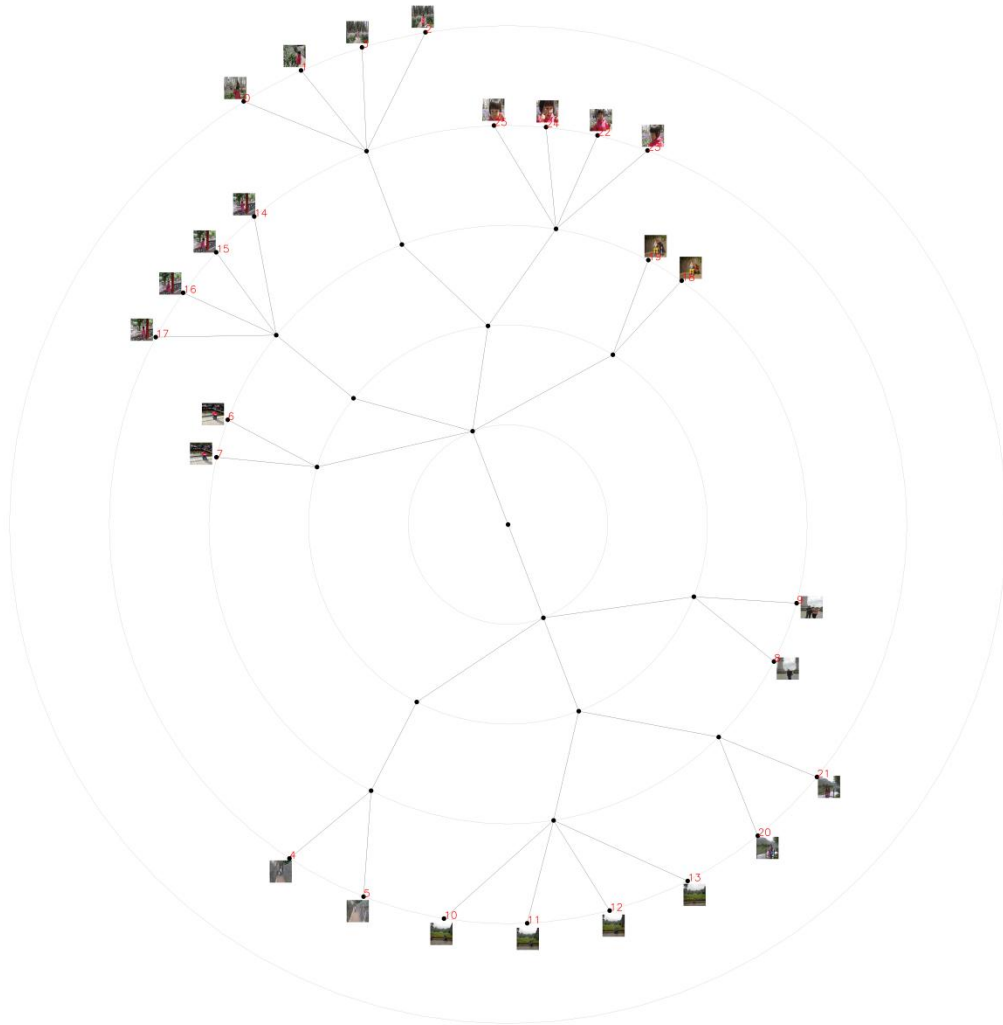
Set #1. Input album



Set #1. Categorization tree



Set #1. Ground truth



Set #1. Image summary (Our method)



Set #1. Image summary (AutoCollage)



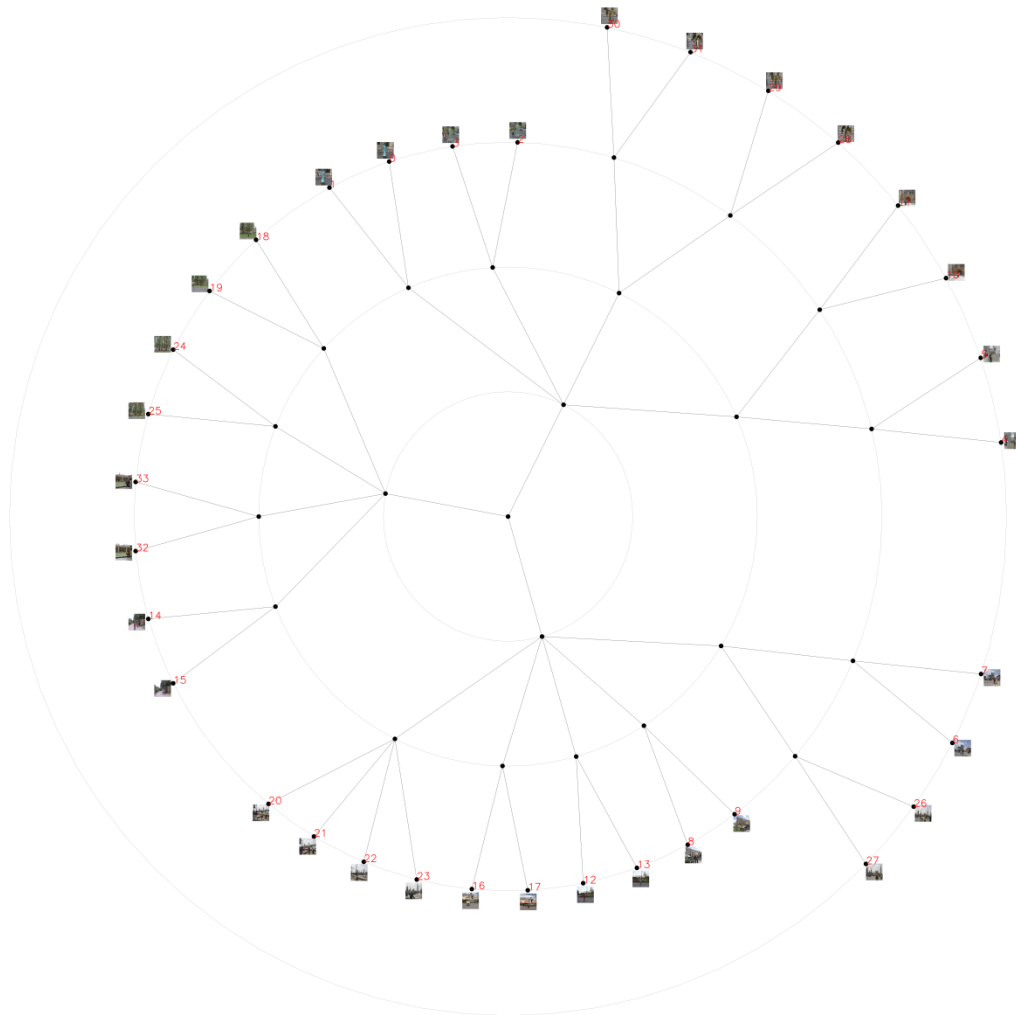
Set #1. Image summary (photo-collage Ref.[YLG*14])



Set #2. Input album



Set #2. Ground truth



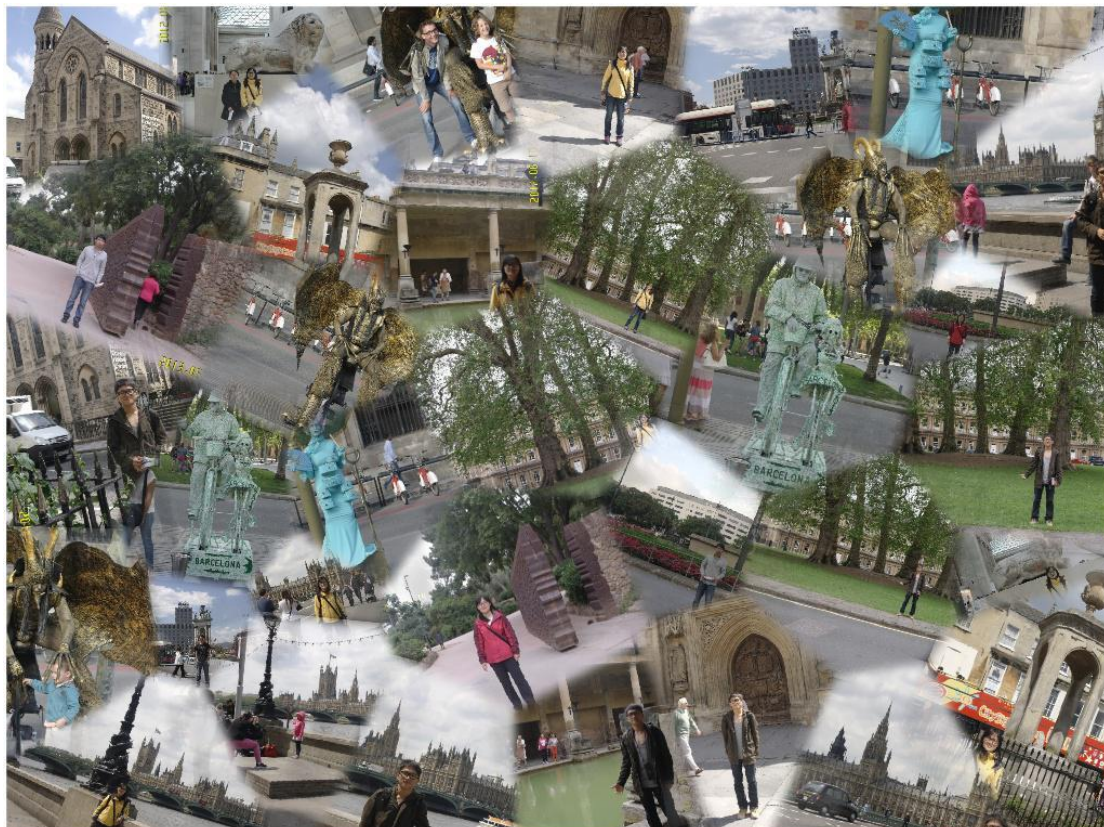
Set #2. Image summary (Our method)



Set #2. Image summary (AutoCollage)



Set #1. Image summary (photo-collage Ref.[YLG*14])



Set #3. Input album



0



1



2



3



4



5



6



7



8



9



10



11



12



13



14



15



16



17



18



19



20



21



22



23



24



25



26



27



28



29



30



31



32



33



34



35



36



37



38



39



40



41



42

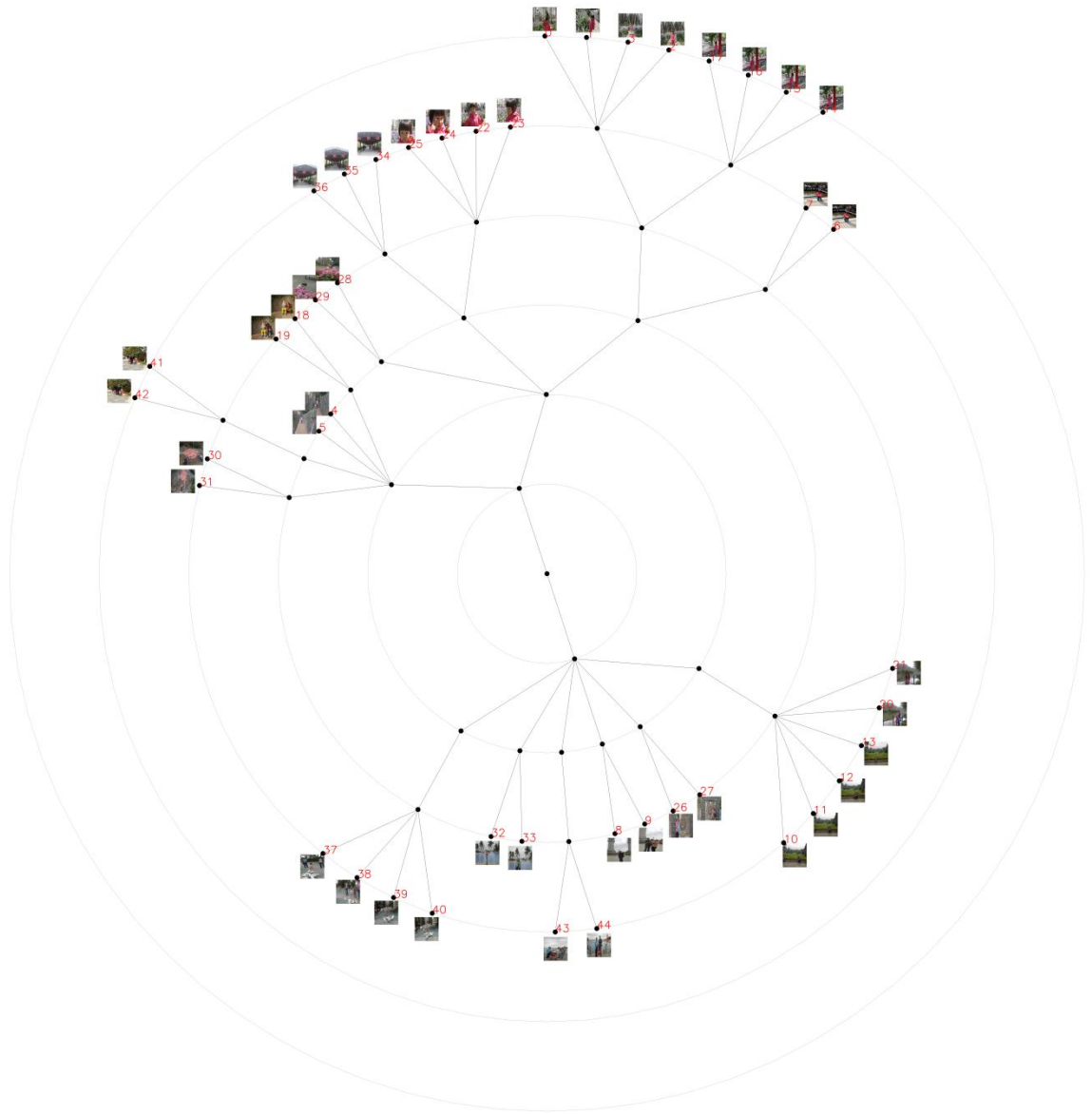


43

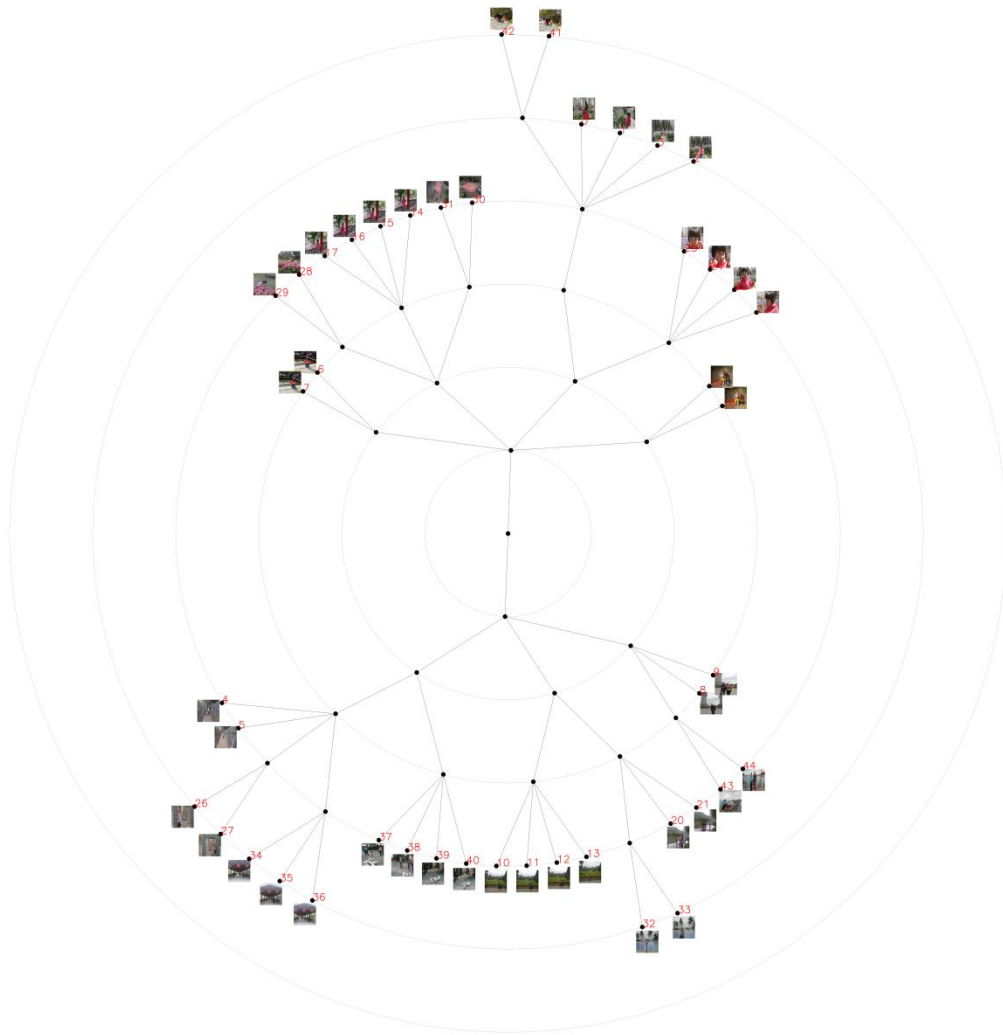


44

Set #3. Categorization tree



Set #3. Ground truth



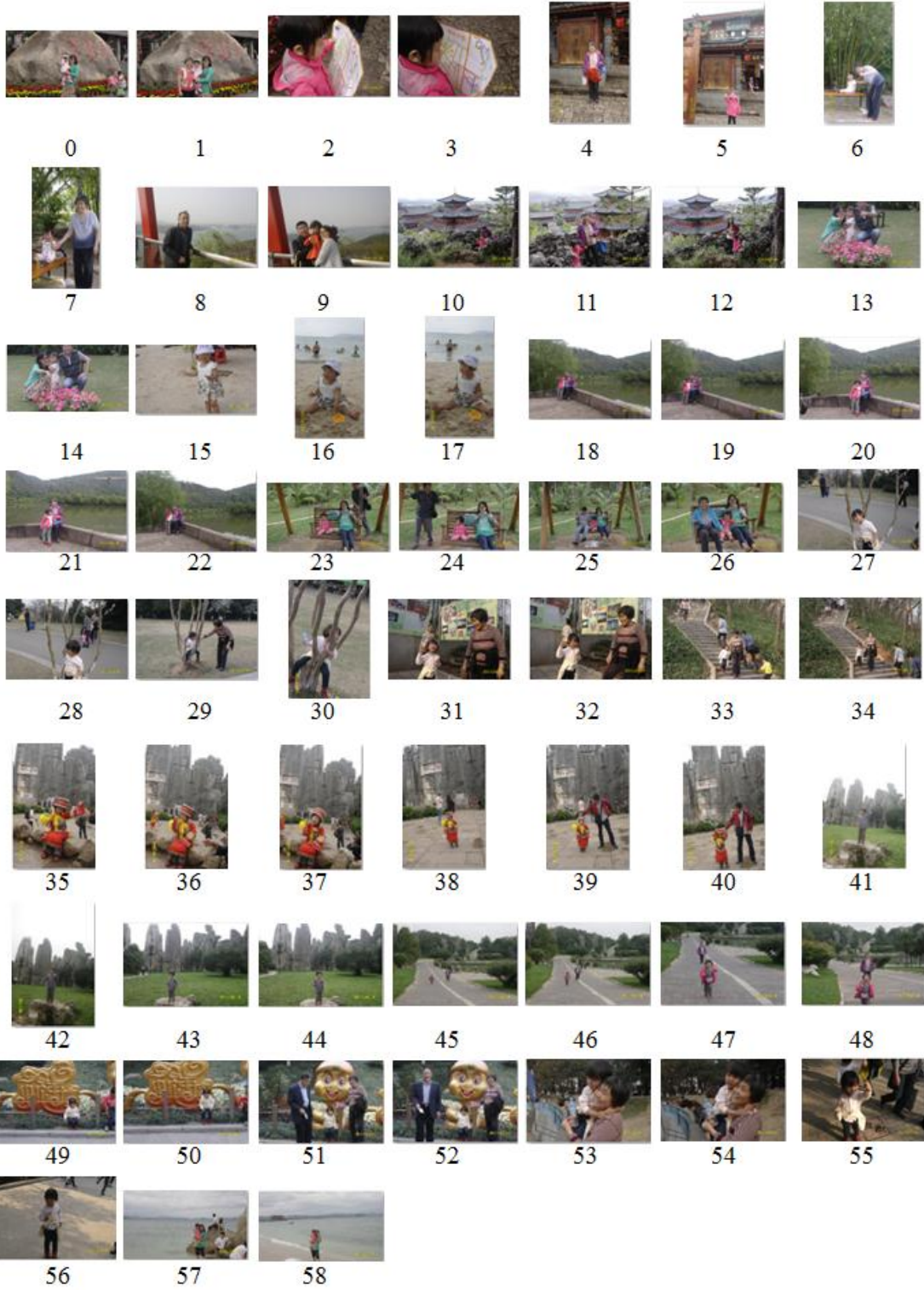
Set #3. Image summary (AutoCollage)



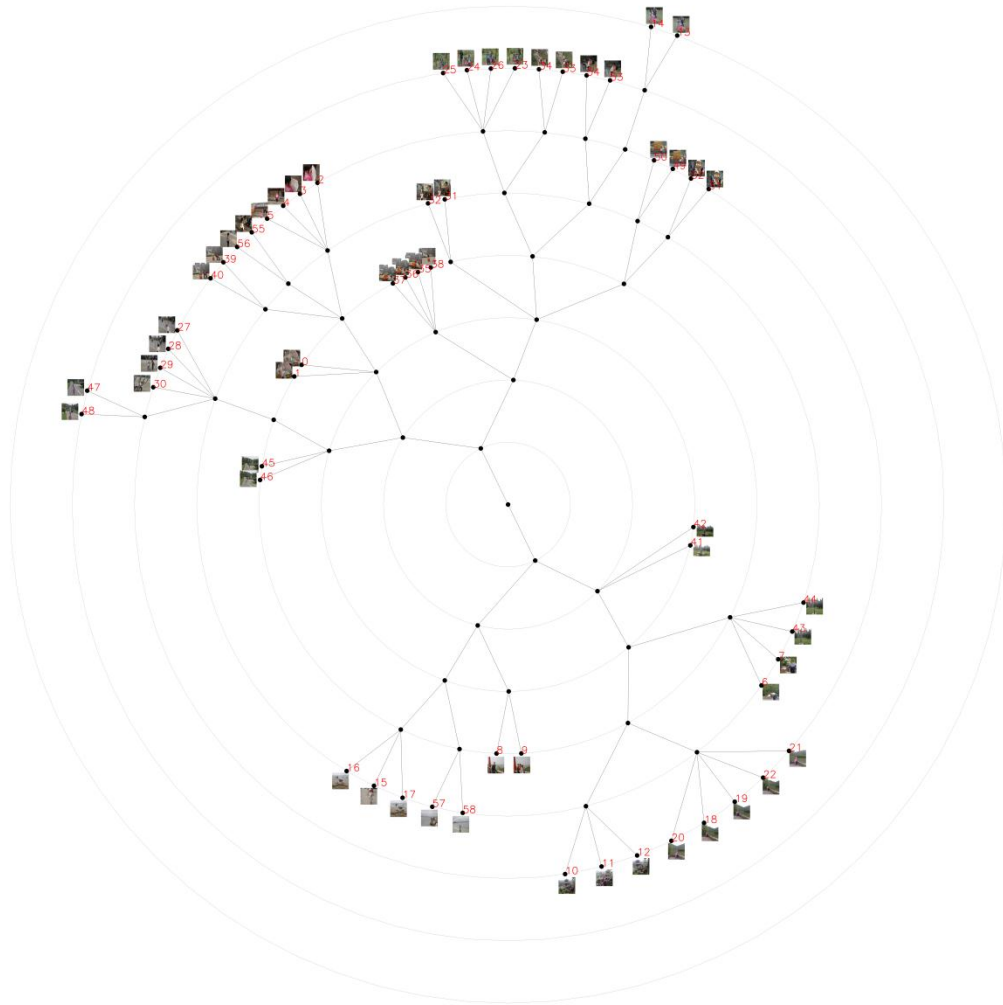
Set #1. Image summary (photo-collage Ref.[YLG*14])



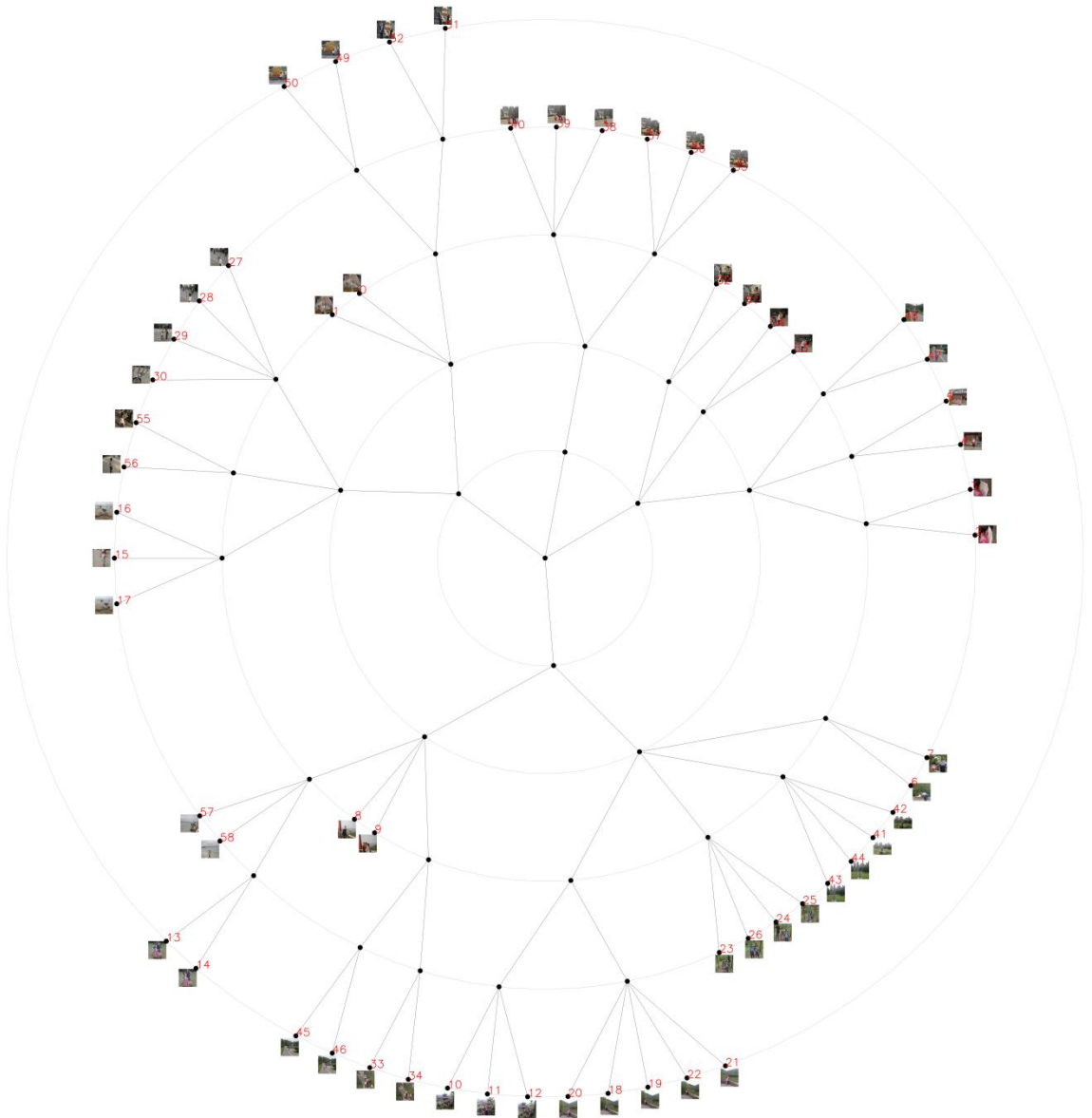
Set #4. Input album



Set #4. Categorization tree



Set #4. Ground truth





Set #4. Image summary (AutoCollage)



Set #1. Image summary (photo-collage Ref.[YLG*14])



References

[YLG*14] Yu Z., Lu L., Guo Y., Fan R., Liu M., Wang W.: Content-aware photo collage using circle packing. *IEEE Transactions on Visualization and Computer Graphics* 20, 2(2014), 182-195.